

3 Part Timed Online

Firearms, Ammunition, Gunsmithing and Barrels

AUCTION

LOCATION: 24400 MN Hwy 22, South Litchfield, MN 55355 / LOADOUT: Monday and Tuesday, June 14 and 15 8AM-4:30PM ONLY

AUCTIONEER'S NOTE: Edward Karel has been collecting guns and related items for a lifetime. This collection will be sold in three auctions spanning two days. These guns are stored in a secure location until pickup & there will be no viewing day. Please look closely at the detailed photos. Steffes Group is a licensed FFL holder and all BATF rules will be followed. Purchaser will be required to pass the federally mandated background check.

TIMED ONLINE ESTATE FIREARM AUCTION

CLOSES: WEDNESDAY, JUNE 9 AT 6PM 2021



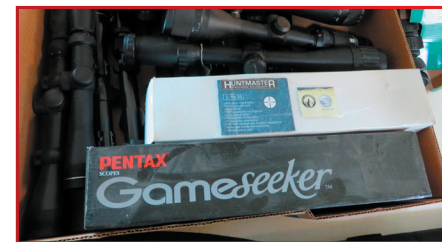
**OVER
400
FIREARMS**



**Rifles / Shotguns / Pistols &
Revolvers / Muzzle Loaders**

Gunsmithing & Barrels AUCTION

CLOSES: THURSDAY, JUNE 10 AT 1PM 2021



Ammunition AUCTION

CLOSES: THURSDAY, JUNE 10 AT 6PM 2021



LOADOUT: Monday and Tuesday, June 14 and 15 8AM-4:30PM ONLY

AUCTIONEER'S NOTE: Edward Karel has been collecting guns and related items for a lifetime. This collection will be sold in three auctions spanning two days. These guns are stored in a secure location until pickup & there will be no viewing day. Please look closely at the detailed photos. Steffes Group is a licensed FFL holder and all BATF rules will be followed. Purchaser will be required to pass the federally mandated background check.

EDWARD KAREL ESTATE FIREARM AUCTION

Scott Gillespie at Steffes Group, 320.693.9371 or 320.760.3066

Complete terms, lot listings and photos at SteffesGroup.com / Scott Gillespie MN14-30

SteffesGroup.com

Steffes Group, Inc., 24400 MN Hwy 22 S, Litchfield, MN 55355

